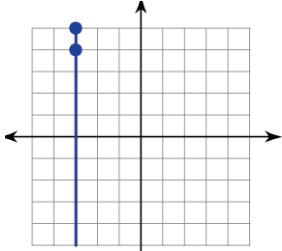




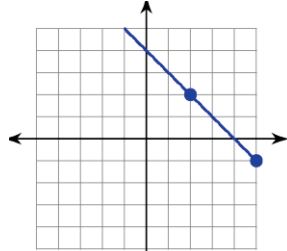
Why did the police arrest a 12 year old boy when he was playing basketball?

Follow the directions for each section below. Cross off your answer and the word above it in the key below. The remaining words give the answer to the riddle.

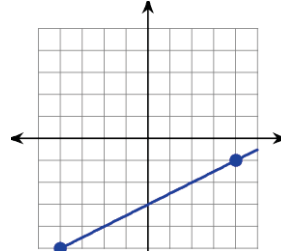
SECTION 1: State the type of slope each line below has.



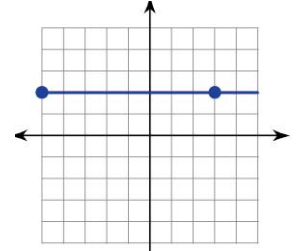
undefined
(no slope)



negative



positive

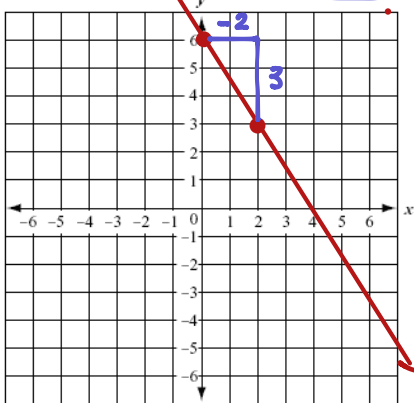


zero

SECTION 2: Graph each set of points and draw a line through them. Find the slope.

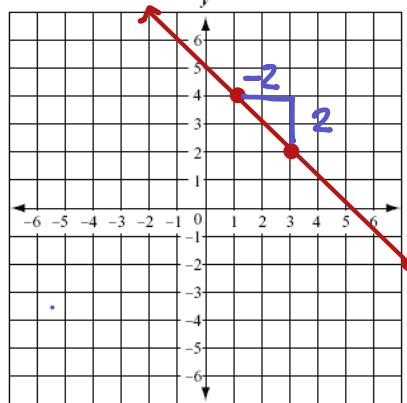
(2, 3) (0, 6)

$$m = \frac{3}{-2}$$



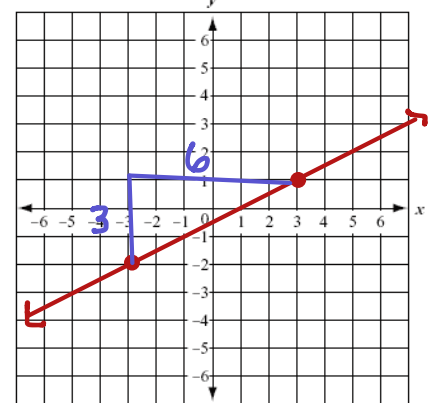
(1, 4) (3, 2)

$$m = \frac{-2}{2} = -1$$



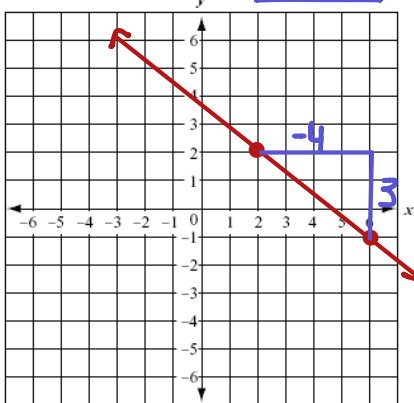
(3, 1) (-3, -2)

$$m = \frac{3}{6} = \frac{1}{2}$$



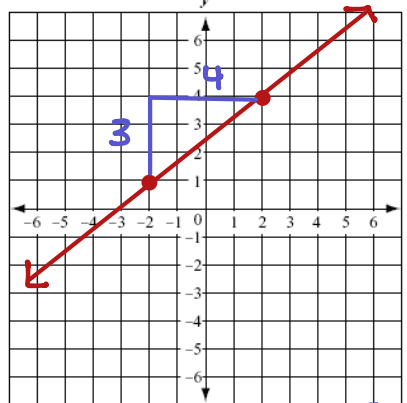
(2, 2) (6, -1)

$$m = \frac{-3}{4}$$



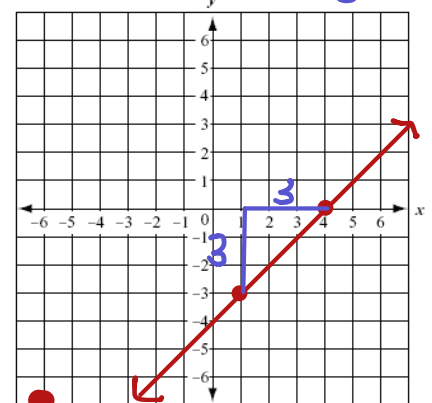
(-2, 1) (2, 4)

$$m = \frac{3}{4}$$



(1 -3) (4, 0)

$$m = \frac{3}{3} = 1$$



THEY	THOUGHT	HE	WAS	IN	STOLE	BUT
$-\frac{3}{4}$	$-\frac{3}{2}$	$\frac{3}{2}$	positive	$\frac{3}{4}$	2	1

THE	BASKET	AND	BALL	WERE	BOTH	WRONG
$\frac{4}{3}$	no slope	zero	-2	1	negative	$\frac{1}{2}$