

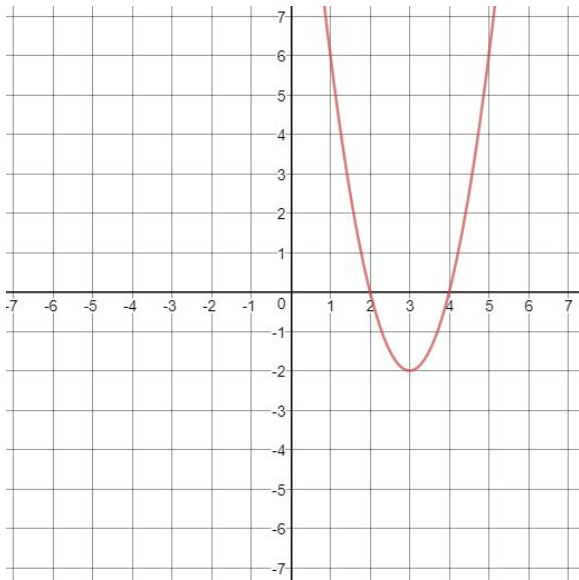
Partner A: _____

Partner B: _____

Matching Quadratic Functions

Directions: Using the equation bank to help you, write the equation of each of the following graphs in all 3 forms.

1.

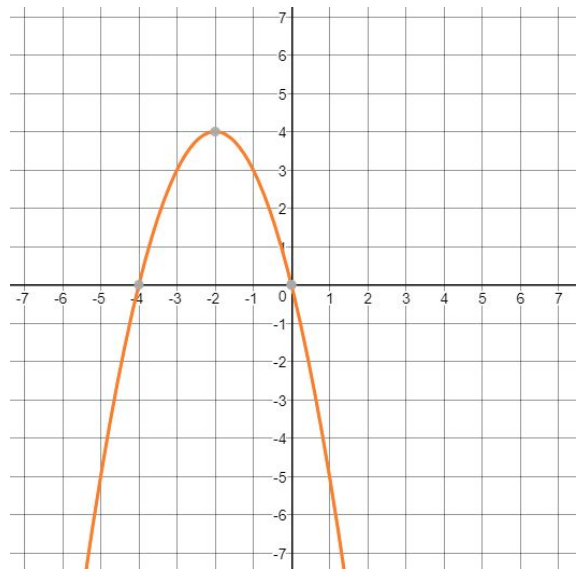


Vertex Form: _____

Standard Form: _____

Factored Form: _____

2.

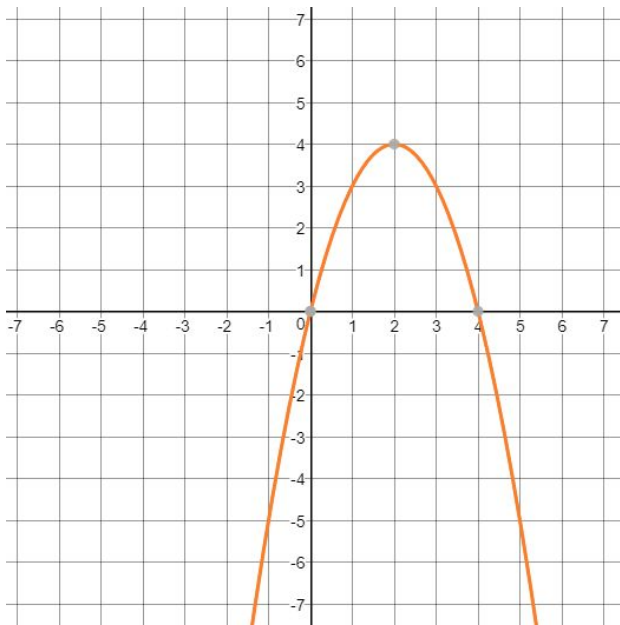


Vertex Form: _____

Standard Form: _____

Factored Form: _____

3.

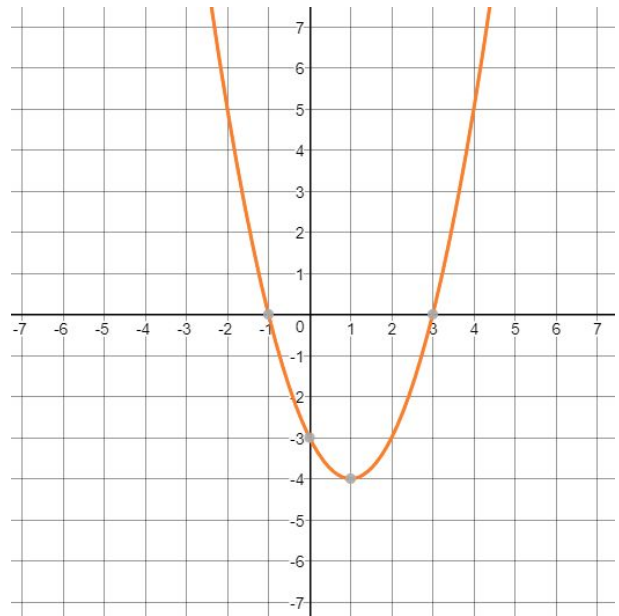


Vertex Form: _____

Standard Form: _____

Factored Form: _____

4.

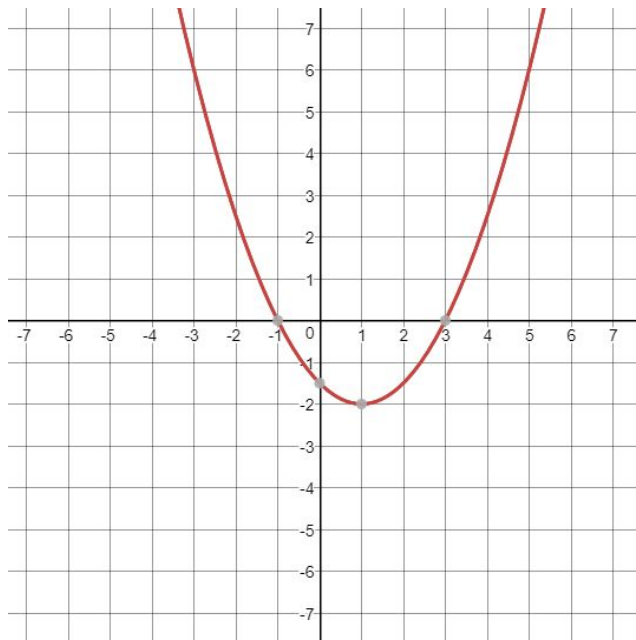


Vertex Form: _____

Standard Form: _____

Factored Form: _____

5.

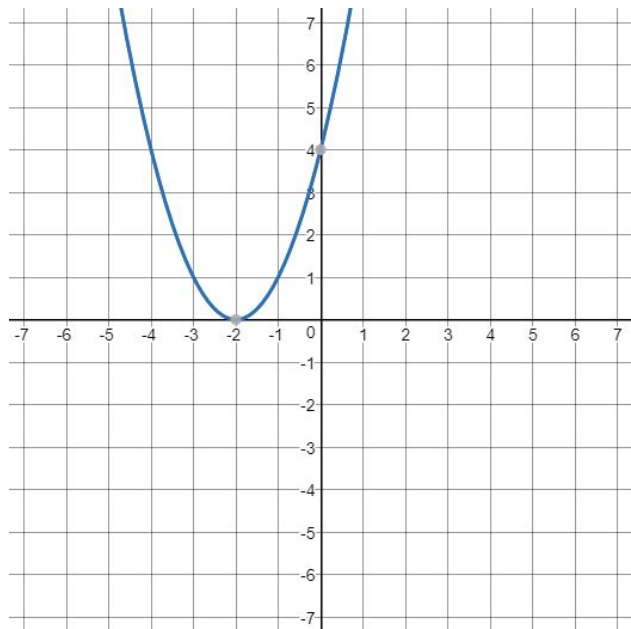


Vertex Form: _____

Standard Form: _____

Factored Form: _____

6.

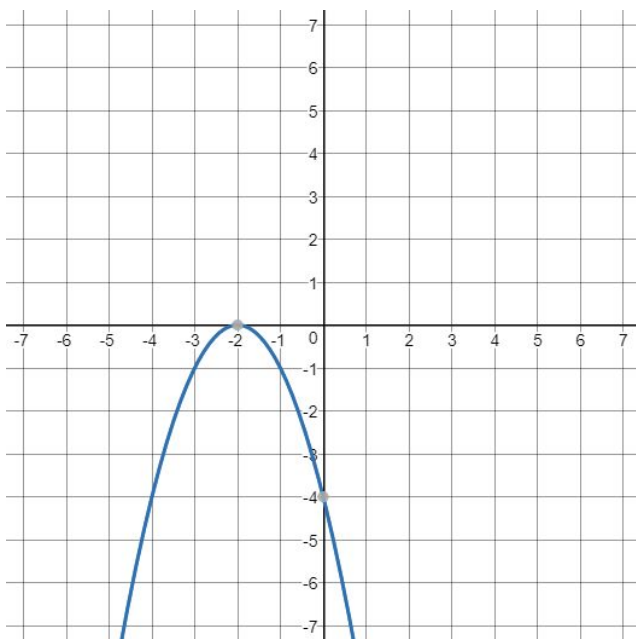


Vertex Form: _____

Standard Form: _____

Factored Form: _____

7.

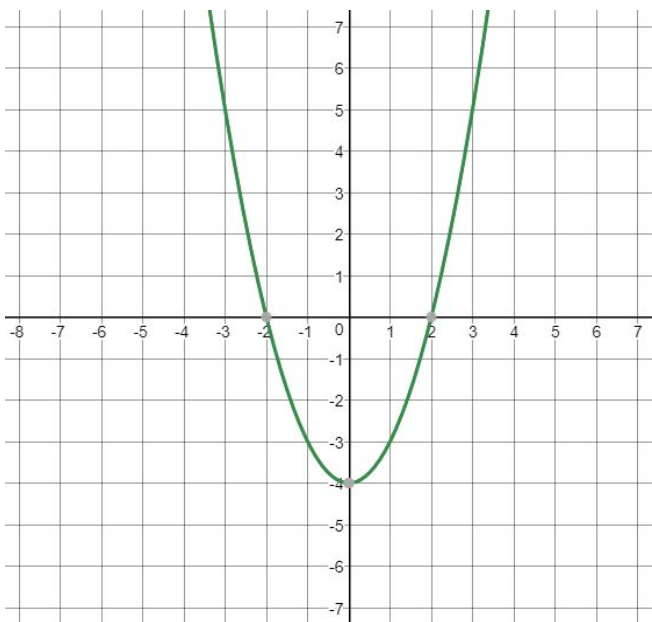


Vertex Form: _____

Standard Form: _____

Factored Form: _____

8.



Vertex Form: _____

Standard Form: _____

Factored Form: _____

Equations

<u>Vertex Form</u>	<u>Standard Form</u>	<u>Factored Form</u>
$y = -(x - 2)^2 + 4$ $y = 2(x - 3)^2 - 2$ $y = -(x + 2)^2$ $y = x^2 - 4$ $y = (x - 1)^2 - 4$ $y = -(x + 2)^2 + 4$ $y = (x + 2)^2$ $y = \frac{1}{2}(x - 1)^2 - 2$	$y = \frac{1}{2}x^2 - 1x - \frac{3}{2}$ $y = x^2 + 4x + 4$ $y = 2x^2 - 12x + 16$ $y = x^2 - 2x - 3$ $y = -x^2 - 4x - 4$ $y = -x^2 - 4x$ $y = x^2 - 4$ $y = -x^2 + 4x$	$y = (x + 2)(x + 2)$ $y = (x + 1)(x - 3)$ $y = 2(x - 2)(x - 4)$ $y = \frac{1}{2}(x + 1)(x - 3)$ $y = -(x + 2)(x + 2)$ $y = -x(x + 4)$ $y = -x(x - 4)$ $y = (x + 2)(x - 2)$

Equations

<u>Vertex Form</u>	<u>Standard Form</u>	<u>Factored Form</u>
$y = -(x - 2)^2 + 4$ $y = 2(x - 3)^2 - 2$ $y = -(x + 2)^2$ $y = x^2 - 4$ $y = (x - 1)^2 - 4$ $y = -(x + 2)^2 + 4$ $y = (x + 2)^2$ $y = \frac{1}{2}(x - 1)^2 - 2$	$y = \frac{1}{2}x^2 - 1x - \frac{3}{2}$ $y = x^2 + 4x + 4$ $y = 2x^2 - 12x + 16$ $y = x^2 - 2x - 3$ $y = -x^2 - 4x - 4$ $y = -x^2 - 4x$ $y = x^2 - 4$ $y = -x^2 + 4x$	$y = (x + 2)(x + 2)$ $y = (x + 1)(x - 3)$ $y = 2(x - 2)(x - 4)$ $y = \frac{1}{2}(x + 1)(x - 3)$ $y = -(x + 2)(x + 2)$ $y = -x(x + 4)$ $y = -x(x - 4)$ $y = (x + 2)(x - 2)$

Equations

<u>Vertex Form</u>	<u>Standard Form</u>	<u>Factored Form</u>
$y = -(x - 2)^2 + 4$ $y = 2(x - 3)^2 - 2$ $y = -(x + 2)^2$ $y = x^2 - 4$ $y = (x - 1)^2 - 4$ $y = -(x + 2)^2 + 4$ $y = (x + 2)^2$ $y = \frac{1}{2}(x - 1)^2 - 2$	$y = \frac{1}{2}x^2 - 1x - \frac{3}{2}$ $y = x^2 + 4x + 4$ $y = 2x^2 - 12x + 16$ $y = x^2 - 2x - 3$ $y = -x^2 - 4x - 4$ $y = -x^2 - 4x$ $y = x^2 - 4$ $y = -x^2 + 4x$	$y = (x + 2)(x + 2)$ $y = (x + 1)(x - 3)$ $y = 2(x - 2)(x - 4)$ $y = \frac{1}{2}(x + 1)(x - 3)$ $y = -(x + 2)(x + 2)$ $y = -x(x + 4)$ $y = -x(x - 4)$ $y = (x + 2)(x - 2)$