

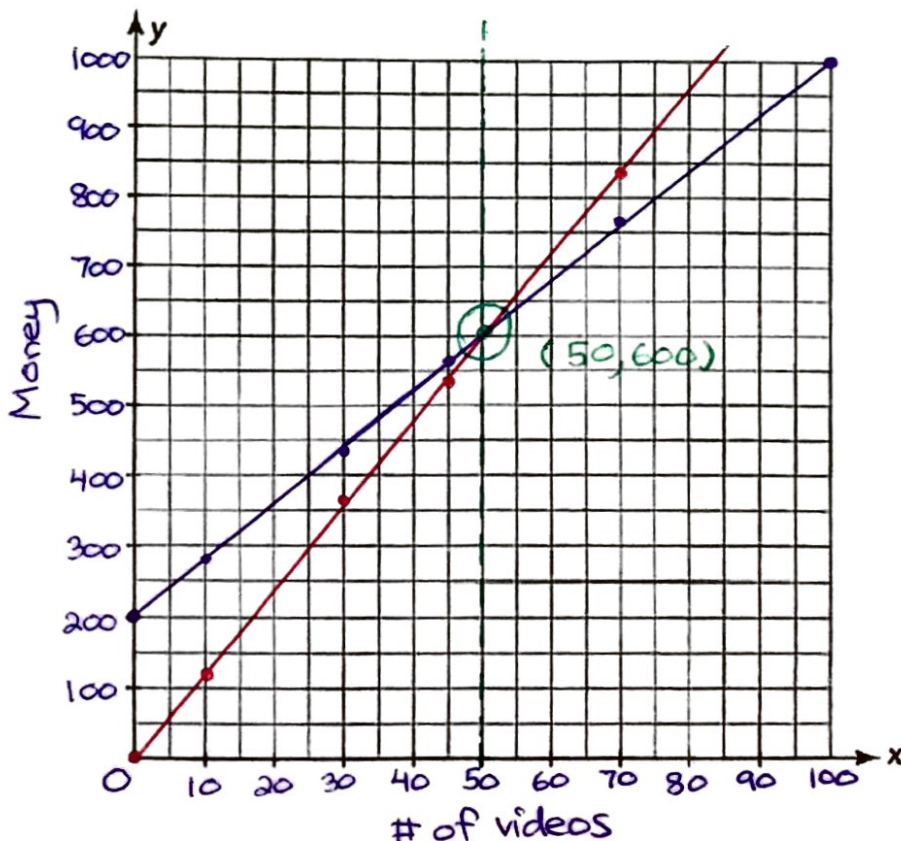
Assignment Page 59 – PRACTICE (LESSON 1: CROSSING PATHS)

1) Cost Equation: $y = 8x + 200$		Income Equation: $y = 12x$	
X represents: # of videos purchased / sold		Y represents: total cost / income	
2) $y = 8(30) + 200$ $= 440$	3) $y = 12(30)$ $= 360$	4) $360 - 440 = -80$	
5) $y = 8(70) + 200$ $= 560 + 200$ $= 760$	6) $y = 12(70)$ $= 840$	7) $840 - 760 = 80$	

8)

Number of Videos	Cost from Wholesaler (\$)	Income (\$)
x	$8x + 200$	$12x$
0	200	0
10	280	120
30	440	360
45	560	540
70	760	840
100	1000	1200

9)



10) $\text{cost} > \text{income}$
Less than 50 videos.

11) $\text{income} > \text{cost}$
More than 50 videos.

12) At 50 videos

13) No profit

14) (50, 600)

15) The cost for 50 videos will be \$600.
She will make \$600 selling 50 videos.

16) More than 50 videos must be sold to make profit.